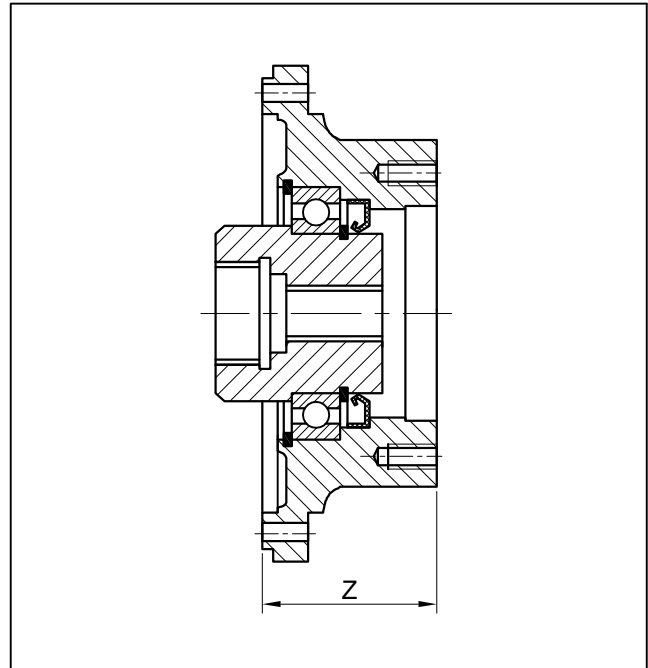




H DROL K MOTOR BA LANTI ADAPTÖRÜ HYDROLIC MOTOR COUPLINGS ANBAUVORRICHTUNG FUER HYDRAULIKMOTORE

	A	B		C	D	
	Z	Z	Z+13.5	Z+15	Z	Z+31
PD 101	1-2-3-4	-	-	-	-	-
PD 103	1-2-3-4	-	-	-	-	-
PD 105	1-2-3-4	-	1	-	-	-
PD 107	1-2-3-4	-	1	-	-	-
PD 109	2-3-4	1	2	-	-	-
PD 111	2-3-4	1	2	-	-	-
PD 113	2-3-4	1	2	-	-	-
PD 115	3-4	2	3	-	-	-
PD 117	3-4	2	3	1	-	-
PD 119	3-4	2	3	-	-	2
PD 121	3-4	2	3	-	-	2
PD 123	3	2	3	-	1	2
PD 125	4	3	4	2	-	-
PD 127	4	3	4	2	-	-
PD 129	4-5	3	4	2	-	3
PD 131	4-5	3	4	2	-	3
PD 133	4-5	3	4	-	2	3
PD 135	5	4	5	3	-	-
PD 137	5	4	5	3	-	-
PD 139	5	4	5	-	3	4
PD 141	5	4	5	-	3	4



	A	B		C	D
	Z	Z	Z+16		
PD 101	2-3-4	-	-	-	-
PD 103	2-3-4	-	-	-	-
PD 105	2-3-4	-	2-3-4	-	-
PD 107	2-3-4	-	2-3-4	-	-
PD 109	2-3-4	-	2-3-4	-	-
PD 111	2-3-4	-	2-3-4	-	-
PD 113	2-3-4	-	2-3-4	-	-
PD 115	3-4	2	3-4	-	-
PD 117	3-4	2	3-4	-	-
PD 119	3-4	-	3-4	-	-
PD 121	4	2-3	4	-	-
PD 123	4	-	2-3-4	-	-
PD 125	4	-	3-4	-	-
PD 127	4	-	3-4	-	-
PD 129	5	4	5	-	-
PD 131	5	4	5	-	-
PD 133	5	4	5	-	-
PD 135	5	4	5	-	-
PD 137	-	4-5	-	-	-
PD 139	-	4-5	-	-	-
PD 141	-	4-5	-	-	-

1-2-3-4-5 numaralı planet di li redüktör kademelerine bakınız.

N.B.: Numbers 1-2-3-4-5 refer to the number of stages of the planetary gear unit.

Die Ziffern 1-2-3-4-5 geben die Anzahl der Getriebestufen an.

Eksenel Pompa / Axial Pump / Axialpumpe		
Motor Tip / Motor type / Motortyp	Z	Kod / Code Bestell
M2-AMVCS 34-40-50-55/32 DP TH13	52	1804.323.001
M2-AMVCS 34-40-50-55/32 DP TH15	52	1804.323.002
AMF 24-34	81	1804.323.003
AMF 55	81	1804.323.004

GEOLINK Eksenel Pompa / Axial Pump / Axialpumpe		
Motor Tip / Motor type / Motortyp	Z	Kod / Code Bestell
GHL/GFS/GFS Ø 25 CH8	61.5	1804.324.001
GHL/GFS/GFS Ø 25.4 CH6.35	61.5	1804.324.002
GHL/GFS/GFS SAE 1"6B	61.5	1804.323.011
GHL/GFS/GFS 25x22 DIN 5482 TH14	61.5	1804.323.012
GLS Ø 32 CH10	77.5	1804.324.003
GLC	38	1804.323.005
GWS/GWP/GWR - ED	61	1803.200.051
GWS/GWP/GWR - EDF	61	1803.200.056

DANFOSS		
Motor Tip / Motor type / Motortyp	Z	Kod / Code Bestell
OMM Ø CH5	70.5	1804.324.021
OMP - OMR Ø 25	61.5	1804.324.001
OMP - OMR Ø 25.4	61.5	1804.324.002
OMP - OMR SAE 1"6B	61.5	1804.323.011
OMS Ø 32	77.5	1804.324.003
OMS 12/24 DP TH14	77.5	1804.324.022
OMSS	38	1804.323.005
OMT Ø 40	134	1804.324.022
OMTS	78	1804.323.023